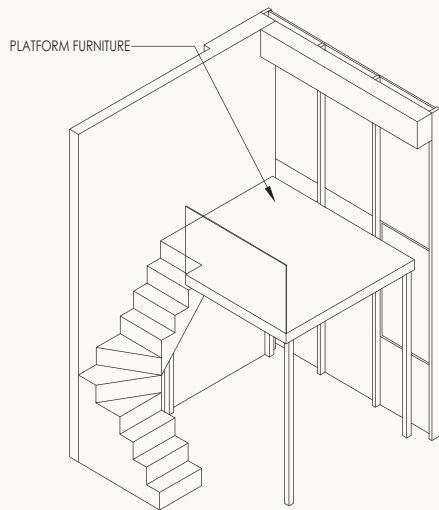
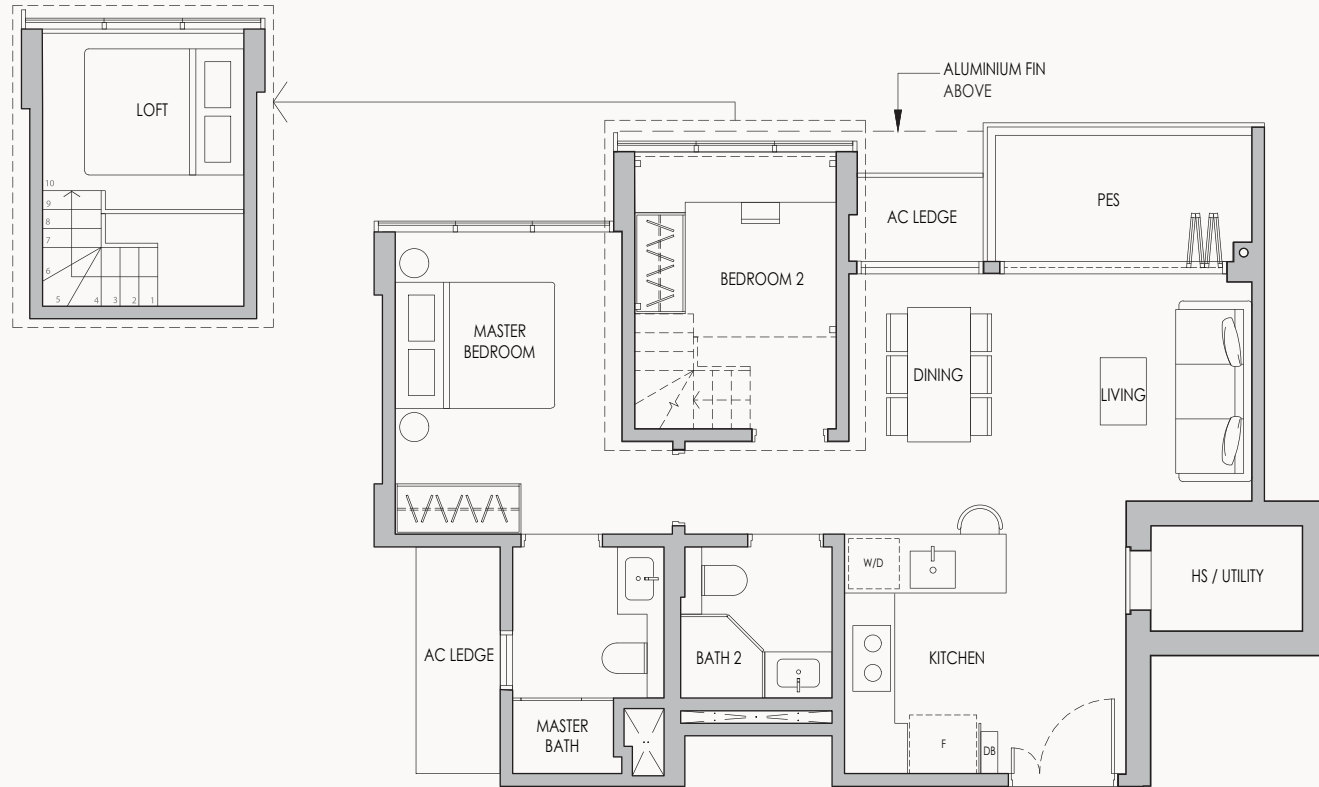


TYPE A1-G

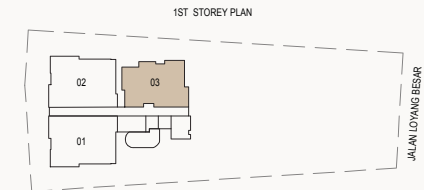
2-BEDROOM + UTILITY
WITH FURNITURE LOFT

Area: 775 sq ft / 72 sq m
(includes 6 sq m PES & 5 sq m ac ledge)

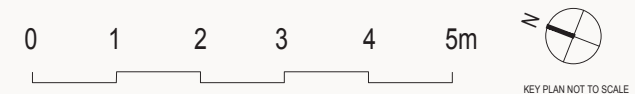
Unit: #01-03



ISOMETRIC VIEW



Disclaimer:
All plans are subjected to amendments as may be approved by the relevant authorities. Floor areas are approximate measurements and are subjected to final survey.
Legend (where applicable)
* Balconies/PES are not to be enclosed except with a balcony screen which has been approved and complies with the Competent Authority's guidelines.
For an illustration of the approved balcony screen, please refer to this brochure.



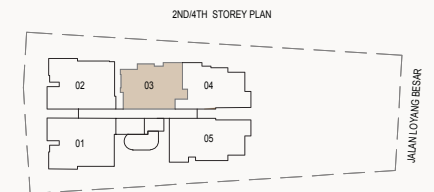
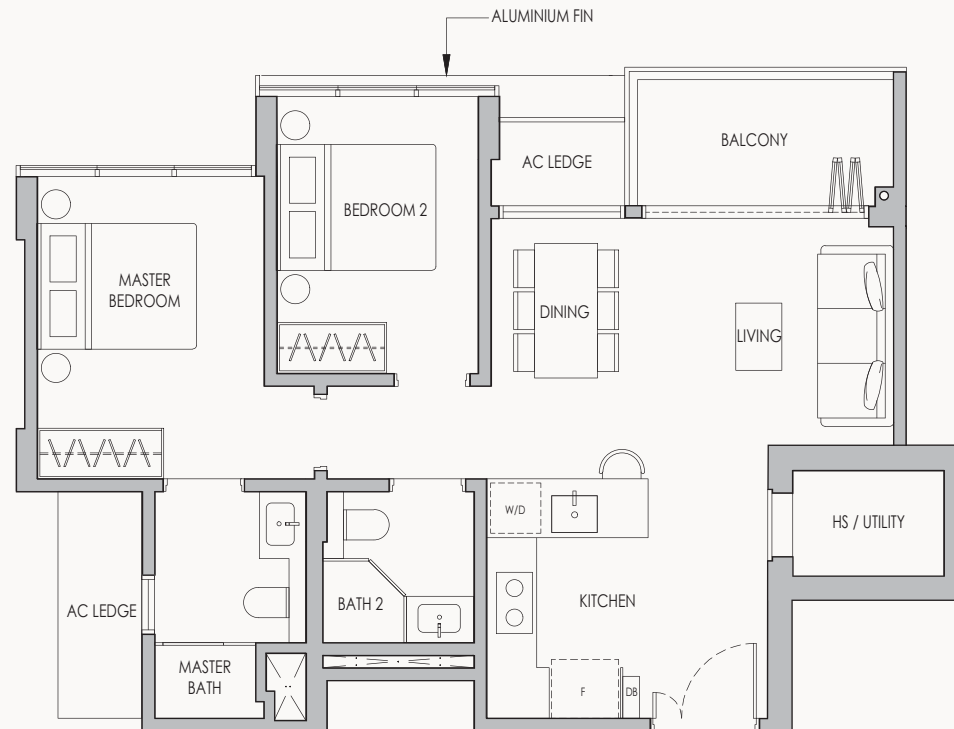
TYPE A1

2-BEDROOM + UTILITY

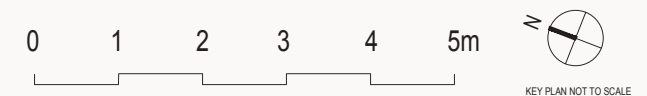
Area: 775 sq ft / 72 sq m

(includes 6 sq m balcony & 5 sq m ac ledge)

Unit: #02-03 & #04-03



Disclaimer:
All plans are subjected to amendments as may be approved by the relevant authorities. Floor areas are approximate measurements and are subjected to final survey.
Legend (where applicable)
* Balconies/PES are not to be enclosed except with a balcony screen which has been approved and complies with the Competent Authority's guidelines.
For an illustration of the approved balcony screen, please refer to this brochure.



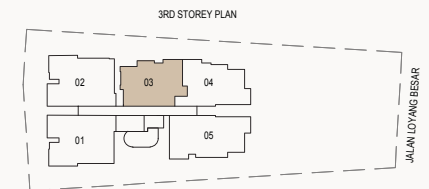
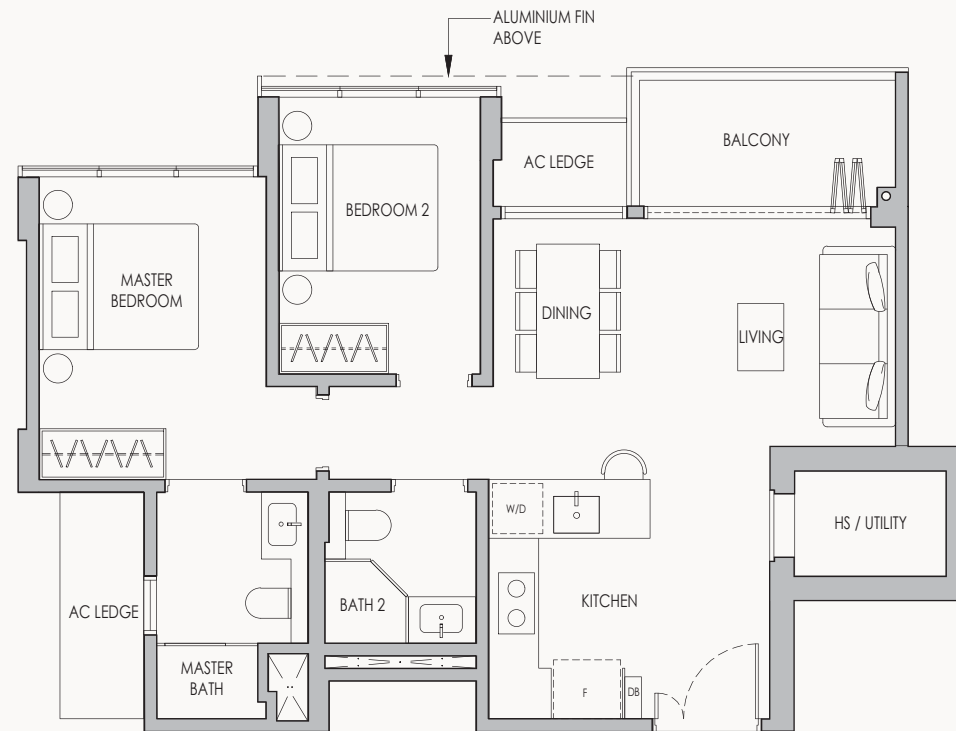
TYPE A1-a

2-BEDROOM + UTILITY

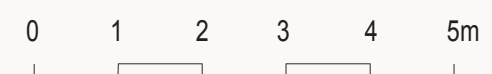
Area: 775 sq ft / 72 sq m

(includes 6 sq m balcony & 5 sq m ac ledge)

Unit: #03-03



Disclaimer:
All plans are subjected to amendments as may be approved by the relevant authorities. Floor areas are approximate measurements and are subjected to final survey.
Legend (where applicable)
* Balconies/PES are not to be enclosed except with a balcony screen which has been approved and complies with the Competent Authority's guidelines.
For an illustration of the approved balcony screen, please refer to this brochure.



KEY PLAN NOT TO SCALE

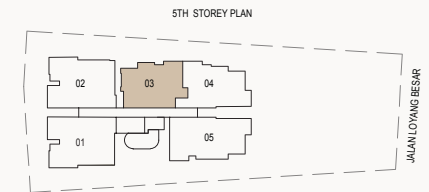
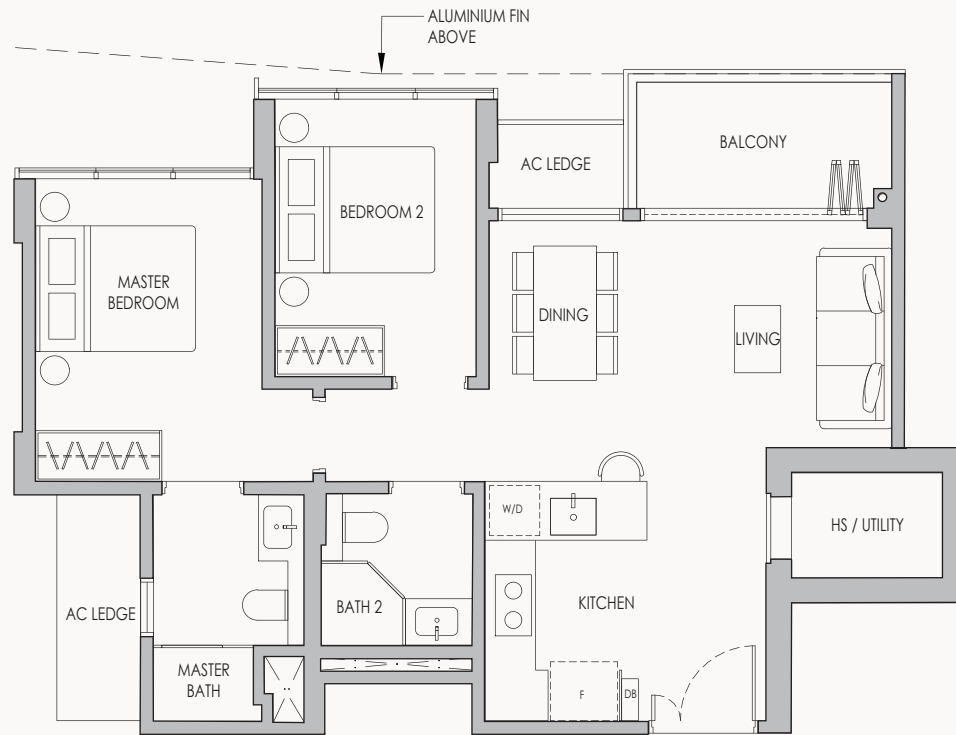
TYPE A1-b

2-BEDROOM + UTILITY

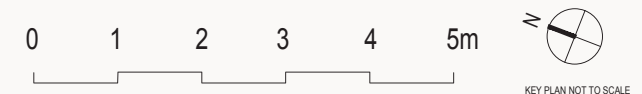
Area: 775 sq ft / 72 sq m

(includes 6 m balcony & 5 sq m ac ledge)

Unit: #05-03



Disclaimer:
All plans are subjected to amendments as may be approved by the relevant authorities. Floor areas are approximate measurements and are subjected to final survey.
Legend (where applicable)
* Balconies/PES are not to be enclosed except with a balcony screen which has been approved and complies with the Competent Authority's guidelines.
For an illustration of the approved balcony screen, please refer to this brochure.



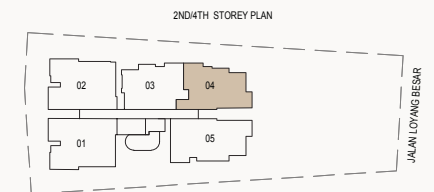
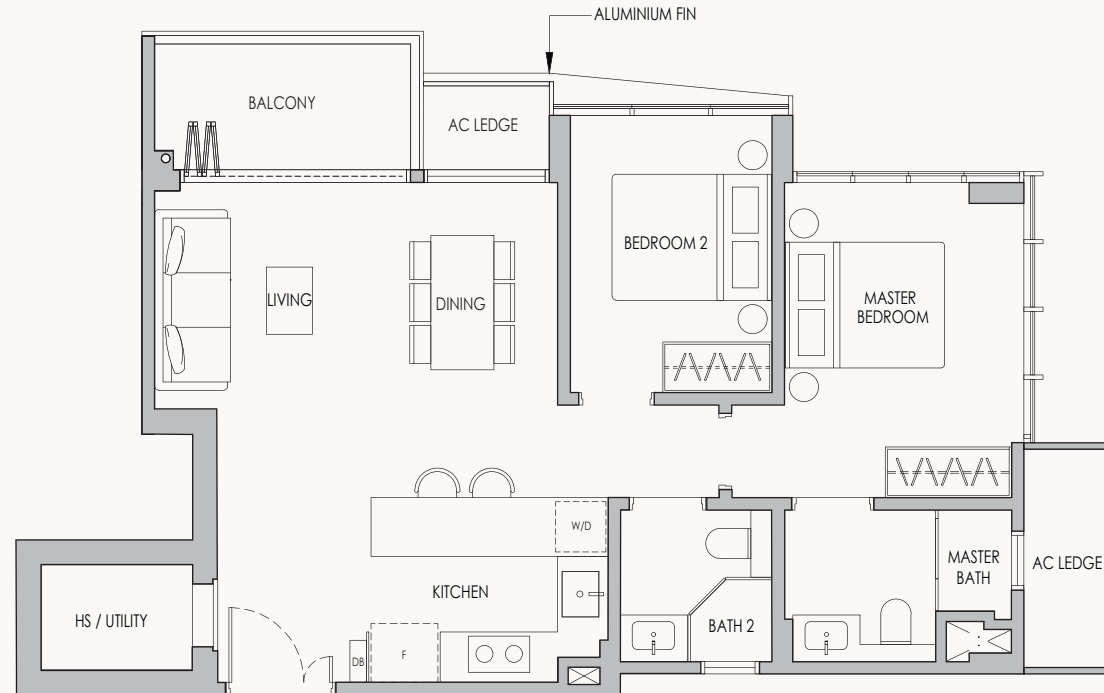
KEY PLAN NOT TO SCALE

TYPE A2

2-BEDROOM + UTILITY

Area: 818 sq ft / 76 sq m
(includes 6 sq m balcony & 5 sq m ac ledge)

Unit: #02-04 & #04-04



Disclaimer:
All plans are subjected to amendments as may be approved by the relevant authorities. Floor areas are approximate measurements and are subjected to final survey.
Legend (where applicable)
* Balconies/PES are not to be enclosed except with a balcony screen which has been approved and complies with the Competent Authority's guidelines.
For an illustration of the approved balcony screen, please refer to this brochure.



KEY PLAN NOT TO SCALE

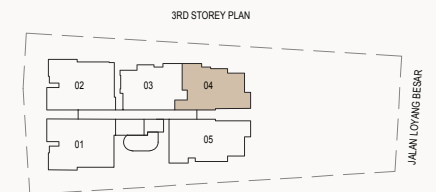
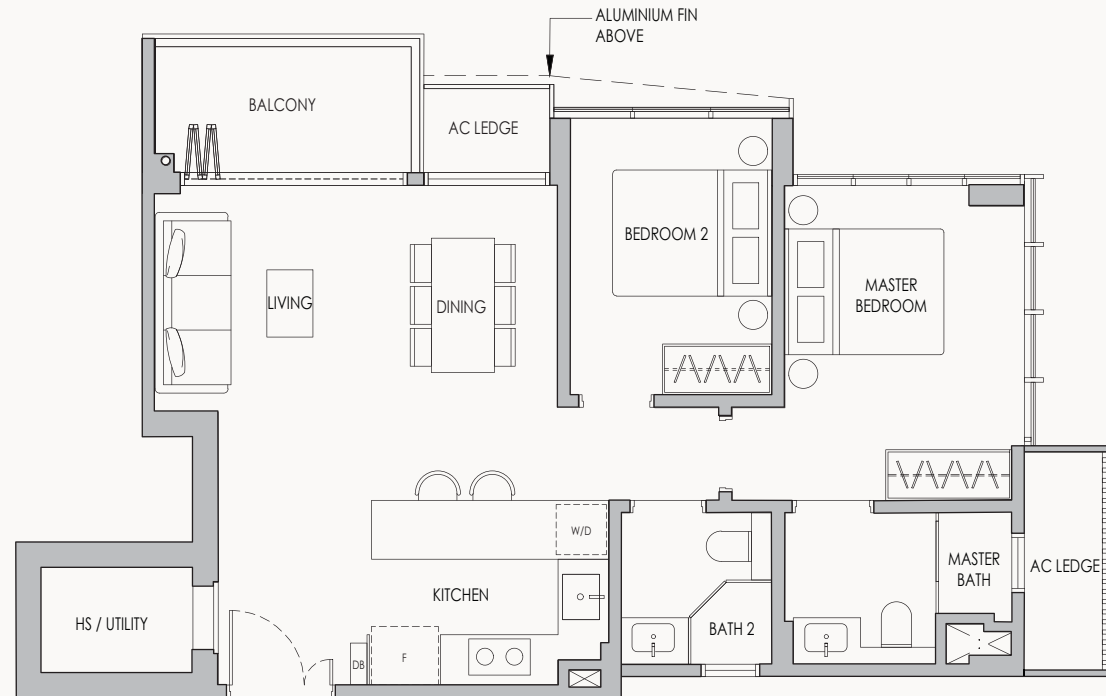
TYPE A2-a

2-BEDROOM + UTILITY

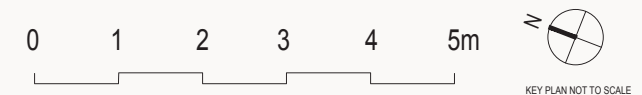
Area: 818 sq ft / 76 sq m

(includes 6 sq m balcony & 5 sq m ac ledge)

Unit: #03-04



Disclaimer:
All plans are subjected to amendments as may be approved by the relevant authorities. Floor areas are approximate measurements and are subjected to final survey.
Legend (where applicable)
* Balconies/PES are not to be enclosed except with a balcony screen which has been approved and complies with the Competent Authority's guidelines.
For an illustration of the approved balcony screen, please refer to this brochure.



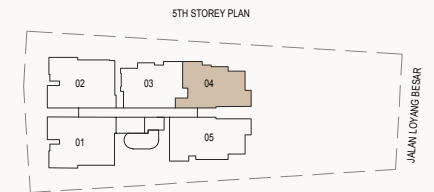
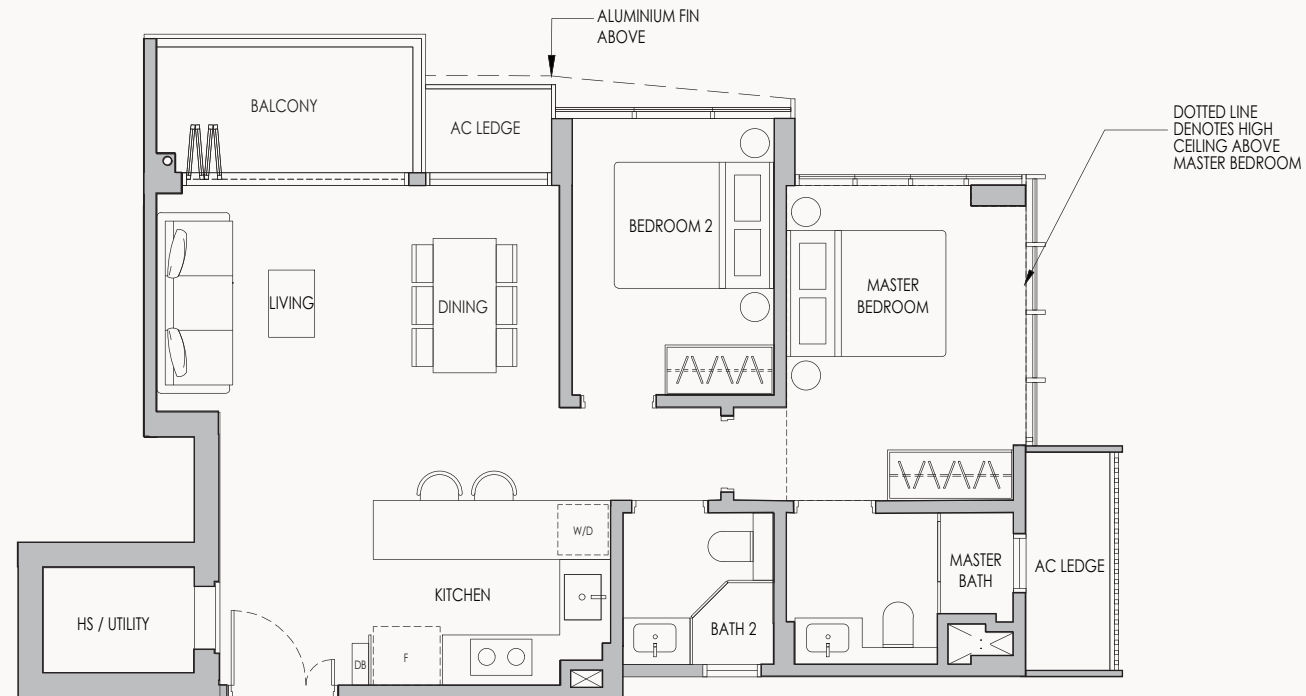
TYPE A2-b

2-BEDROOM + UTILITY

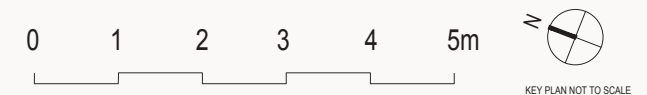
Area: 883 sq ft / 82 sq m

(includes 6 sq m balcony & 5 sq m ac ledge)

Unit: #05-04



Disclaimer:
 All plans are subjected to amendments as may be approved by the relevant authorities. Floor areas are approximate measurements and are subjected to final survey.
 Legend (where applicable)
 * Balconies/PES are not to be enclosed except with a balcony screen which has been approved and complies with the Competent Authority's guidelines.
 For an illustration of the approved balcony screen, please refer to this brochure.

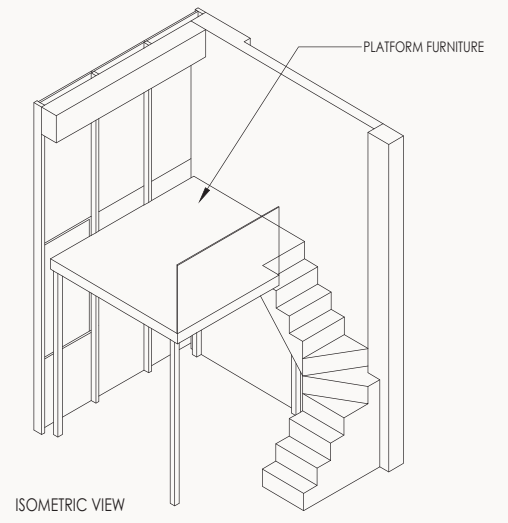
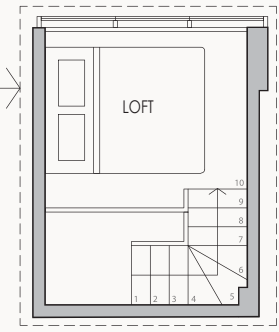
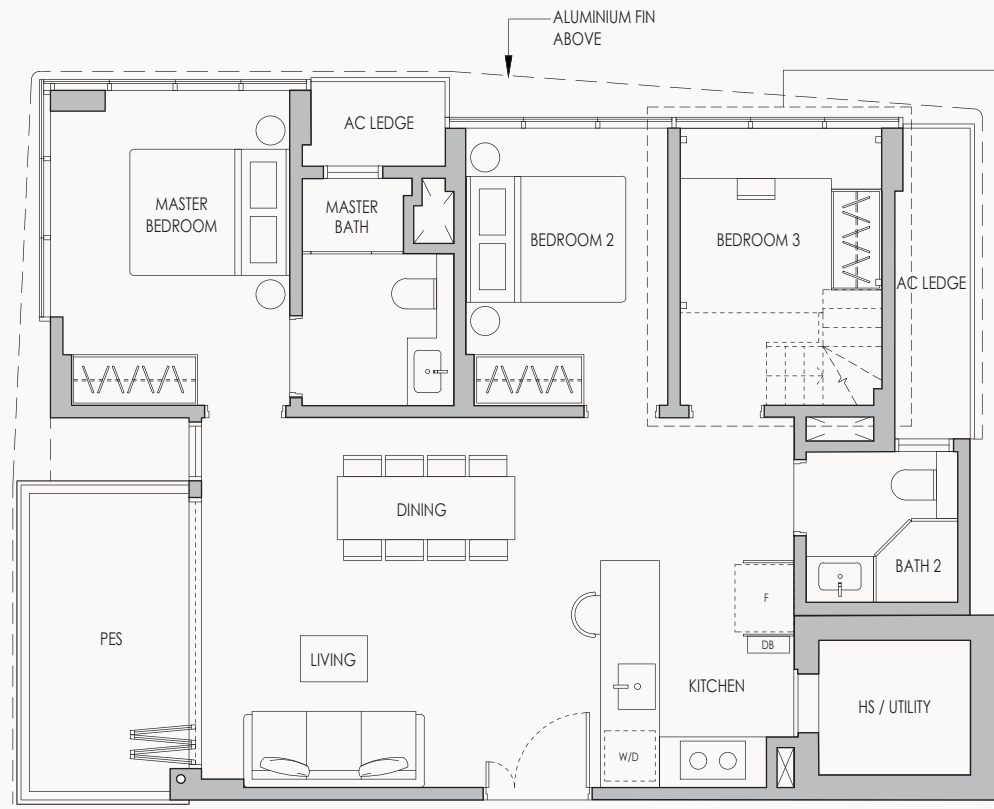


TYPE B1-G

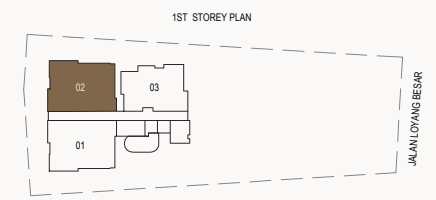
3-BEDROOM + UTILITY
WITH FURNITURE LOFT

Area: 980 sq ft / 91 sq m
(includes 9 sq m PES &
6 sq m ac ledge)

Unit: #01-02

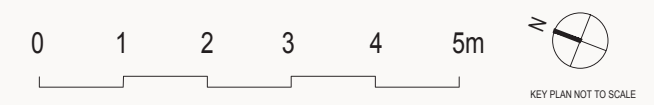


ISOMETRIC VIEW



1ST STOREY PLAN

Disclaimer:
All plans are subjected to amendments as may be approved by the relevant authorities. Floor areas are approximate measurements and are subjected to final survey.
Legend (where applicable)
* Balconies/PES are not to be enclosed except with a balcony screen which has been approved and complies with the Competent Authority's guidelines.
For an illustration of the approved balcony screen, please refer to this brochure.

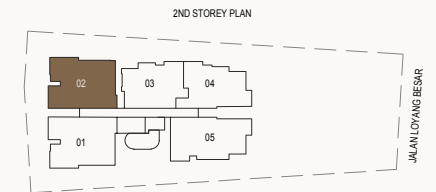
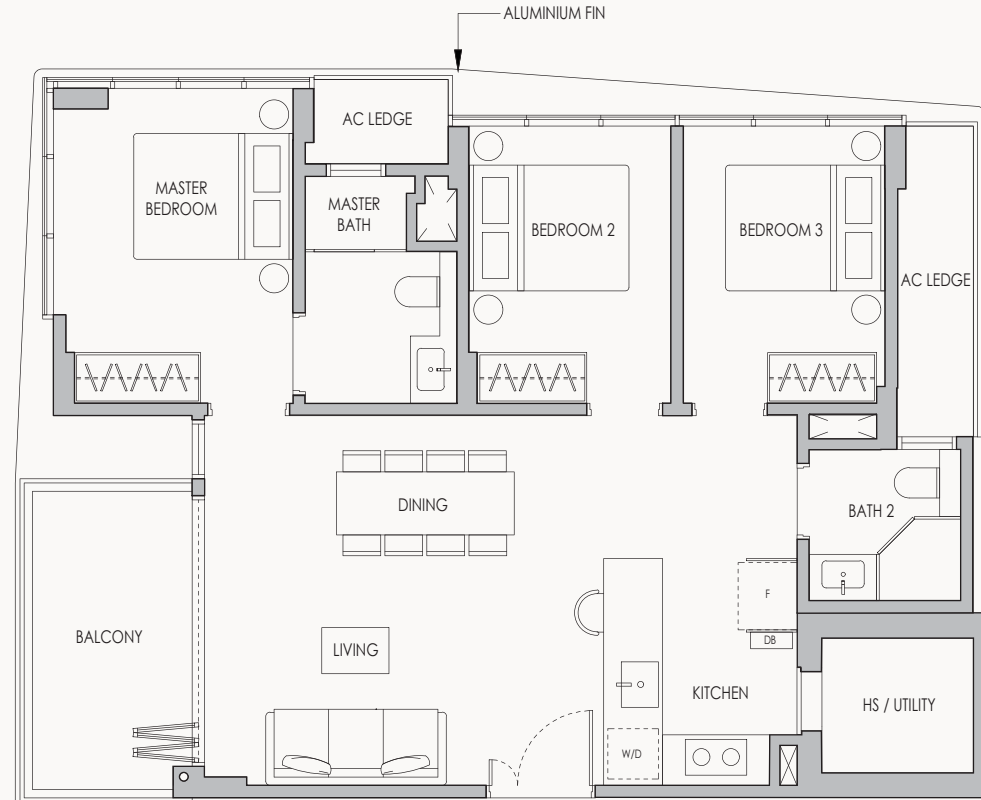


TYPE B1

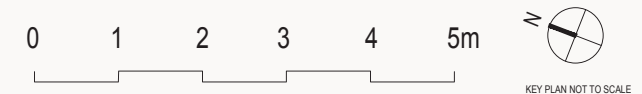
3-BEDROOM + UTILITY

Area: 980 sq ft / 91 sq m
(includes 9 sq m balcony & 6 sq m ac ledge)

Unit: #02-02



Disclaimer:
All plans are subjected to amendments as may be approved by the relevant authorities. Floor areas are approximate measurements and are subjected to final survey.
Legend (where applicable)
* Balconies/PES are not to be enclosed except with a balcony screen which has been approved and complies with the Competent Authority's guidelines.
For an illustration of the approved balcony screen, please refer to this brochure.

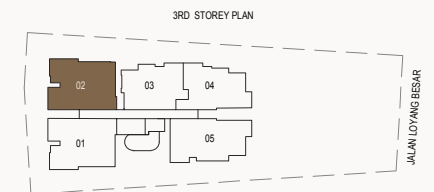
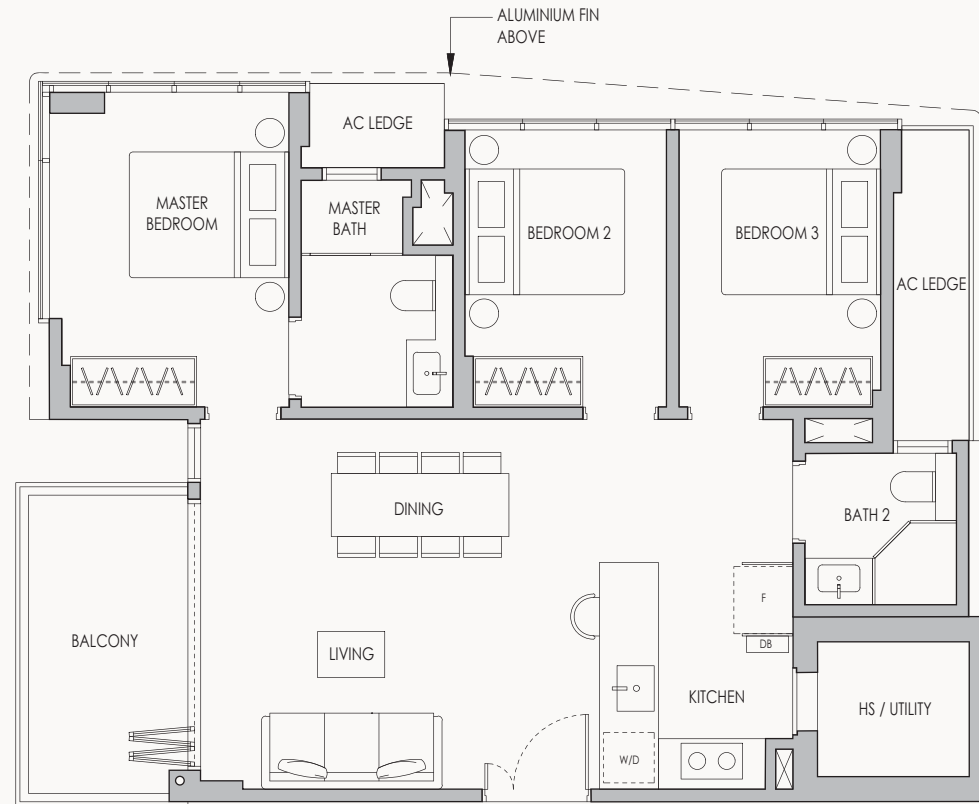


TYPE B1-a

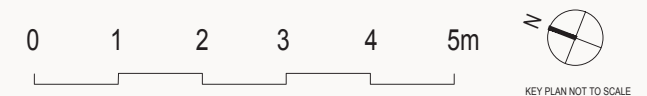
3-BEDROOM + UTILITY

Area: 980 sq ft / 91 sq m
(includes 9 sq m balcony & 6 sq m ac ledge)

Unit: #03-02



Disclaimer:
All plans are subjected to amendments as may be approved by the relevant authorities. Floor areas are approximate measurements and are subjected to final survey.
Legend (where applicable)
* Balconies/PES are not to be enclosed except with a balcony screen which has been approved and complies with the Competent Authority's guidelines.
For an illustration of the approved balcony screen, please refer to this brochure.

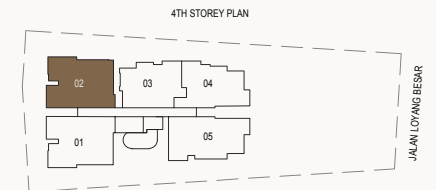
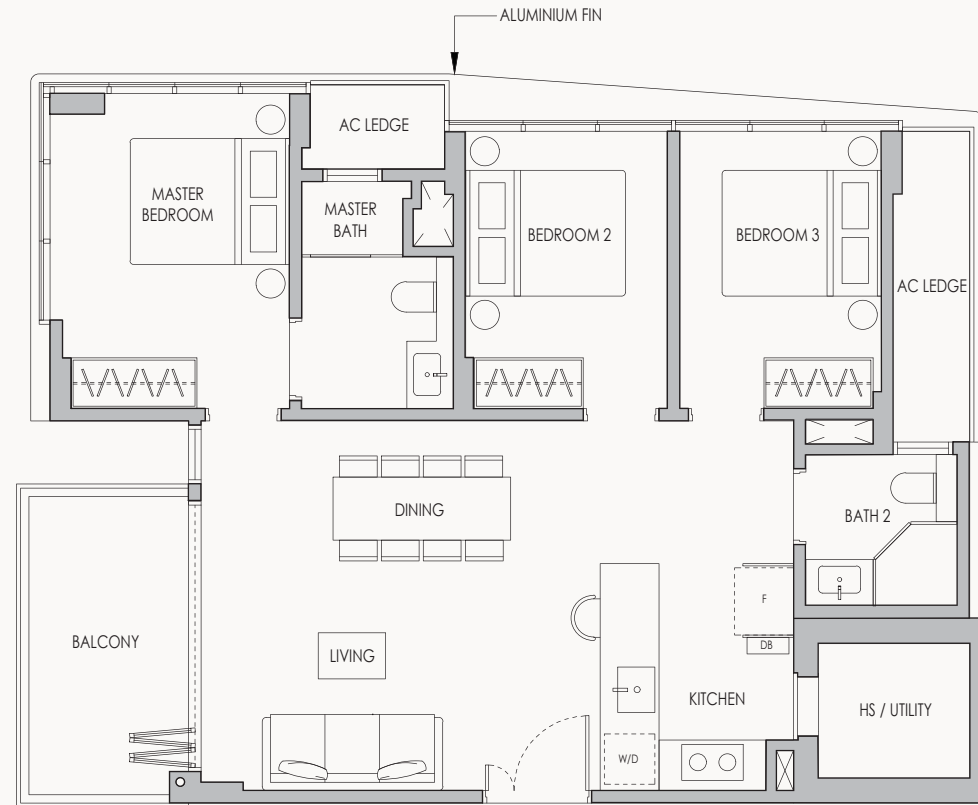


TYPE B1-b

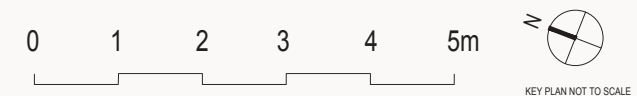
3-BEDROOM + UTILITY

Area: 980 sq ft / 91 sq m
(includes 9 sq m balcony & 6 sq m ac ledge)

Unit: #04-02



Disclaimer:
All plans are subjected to amendments as may be approved by the relevant authorities. Floor areas are approximate measurements and are subjected to final survey.
Legend (where applicable)
* Balconies/PES are not to be enclosed except with a balcony screen which has been approved and complies with the Competent Authority's guidelines.
For an illustration of the approved balcony screen, please refer to this brochure.

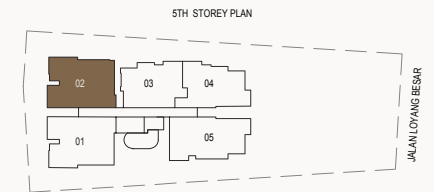
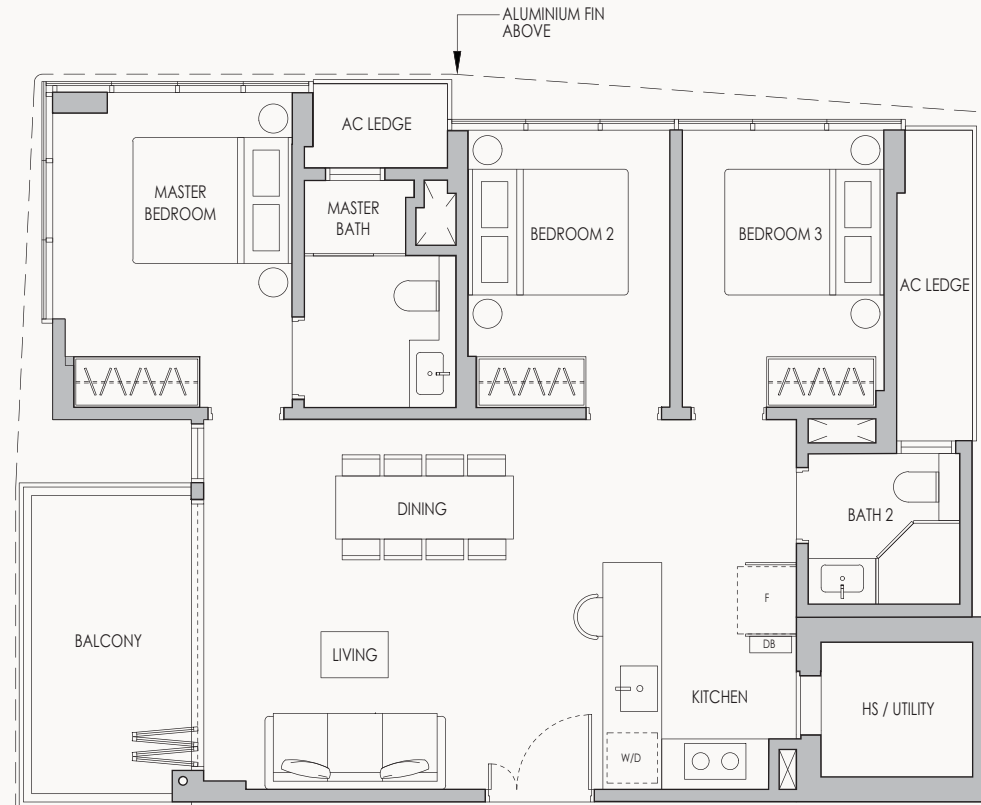


TYPE B1-c

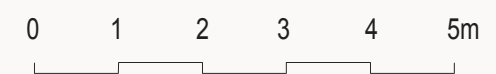
3-BEDROOM + UTILITY

Area: 980 sq ft / 91 sq m
(includes 9 sq m balcony & 6 sq m ac ledge)

Unit: #05-02



Disclaimer:
All plans are subjected to amendments as may be approved by the relevant authorities. Floor areas are approximate measurements and are subjected to final survey.
Legend (where applicable)
* Balconies/PES are not to be enclosed except with a balcony screen which has been approved and complies with the Competent Authority's guidelines.
For an illustration of the approved balcony screen, please refer to this brochure.



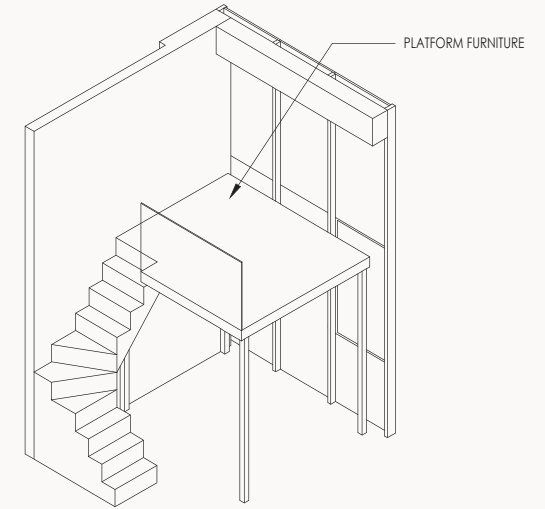
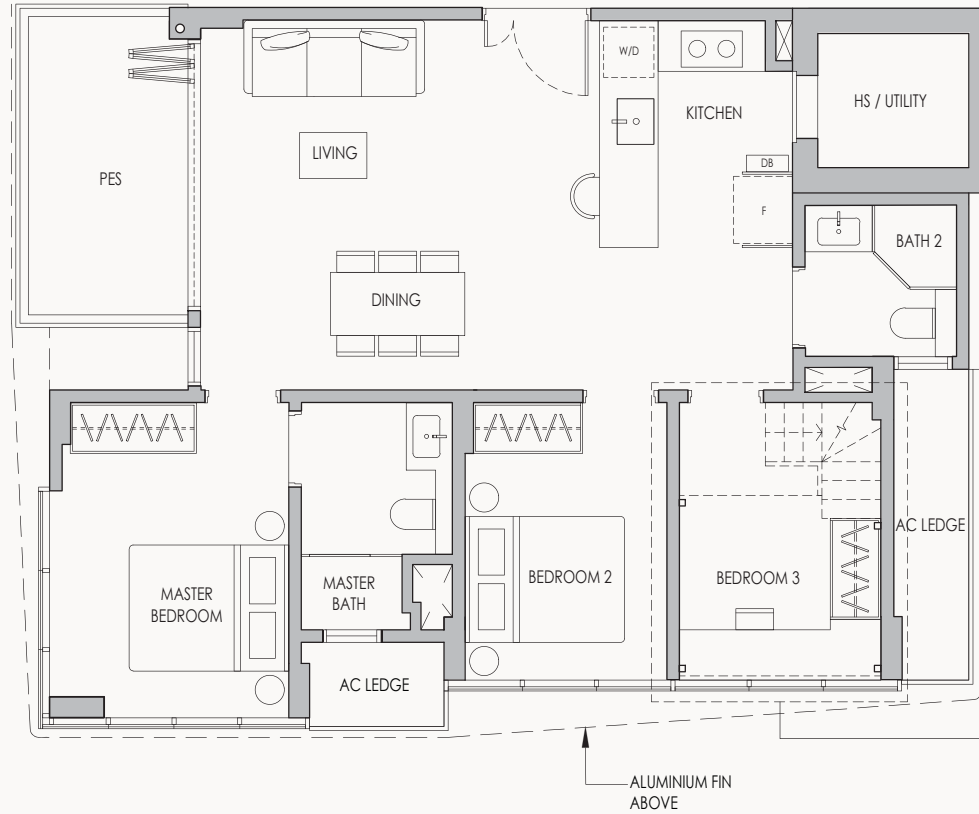
KEY PLAN NOT TO SCALE

TYPE B1-G*

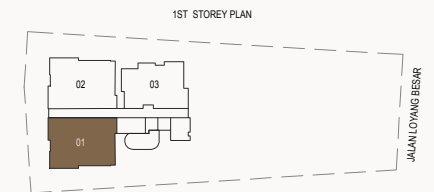
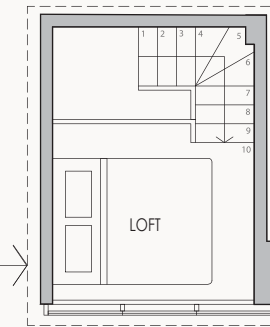
3-BEDROOM + UTILITY
WITH FURNITURE LOFT

Area: 980 sq ft / 91 sq m
(includes 9 sq m PES &
6 sq m ac ledge)

Unit: #01-01

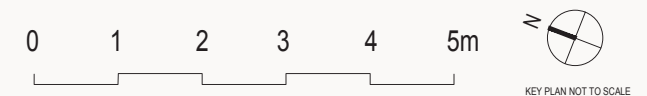


ISOMETRIC VIEW



1ST STOREY PLAN

Disclaimer:
All plans are subjected to amendments as may be approved by the relevant authorities. Floor areas are approximate measurements and are subjected to final survey.
Legend (where applicable)
* Balconies/PES are not to be enclosed except with a balcony screen which has been approved and complies with the Competent Authority's guidelines.
For an illustration of the approved balcony screen, please refer to this brochure.



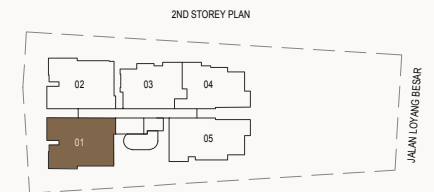
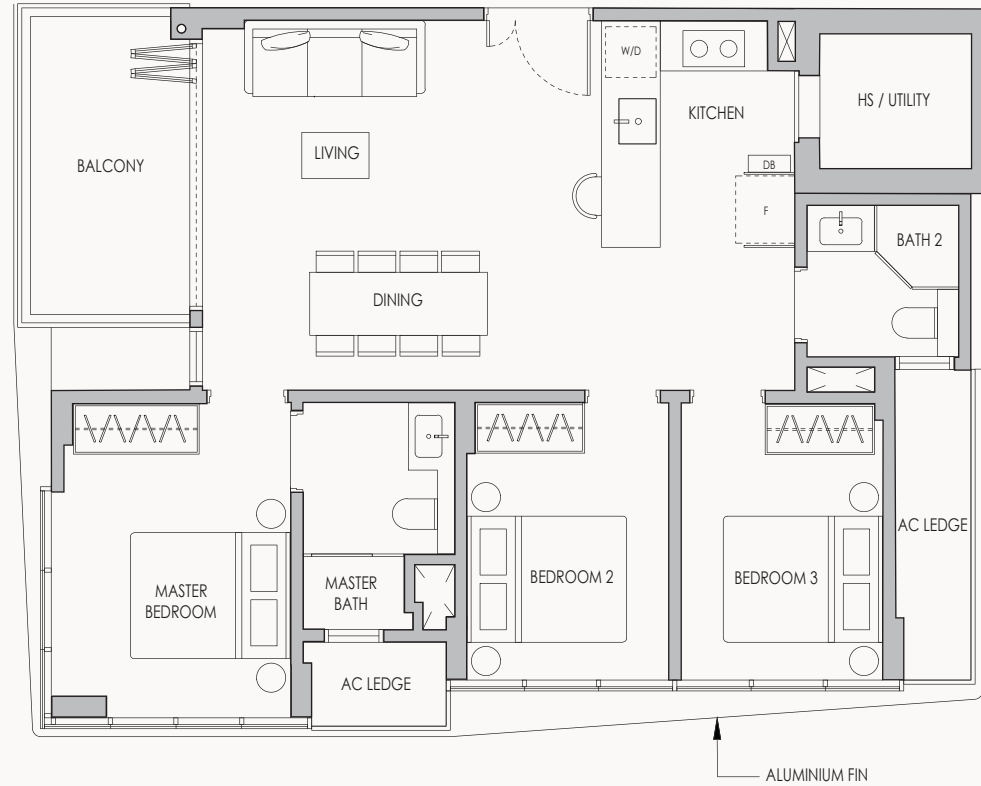
TYPE B1*

3-BEDROOM + UTILITY

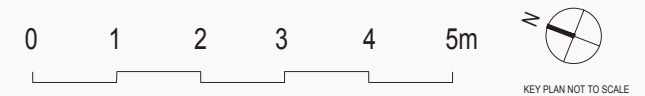
Area: 980 sq ft / 91 sq m

(includes 9 sq m balcony & 6 sq m ac ledge)

Unit: #02-01



Disclaimer:
All plans are subjected to amendments as may be approved by the relevant authorities. Floor areas are approximate measurements and are subjected to final survey.
Legend (where applicable)
* Balconies/PES are not to be enclosed except with a balcony screen which has been approved and complies with the Competent Authority's guidelines.
For an illustration of the approved balcony screen, please refer to this brochure.

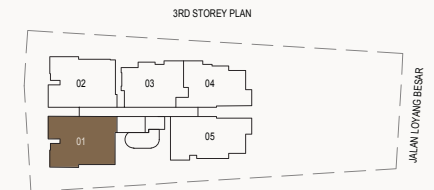
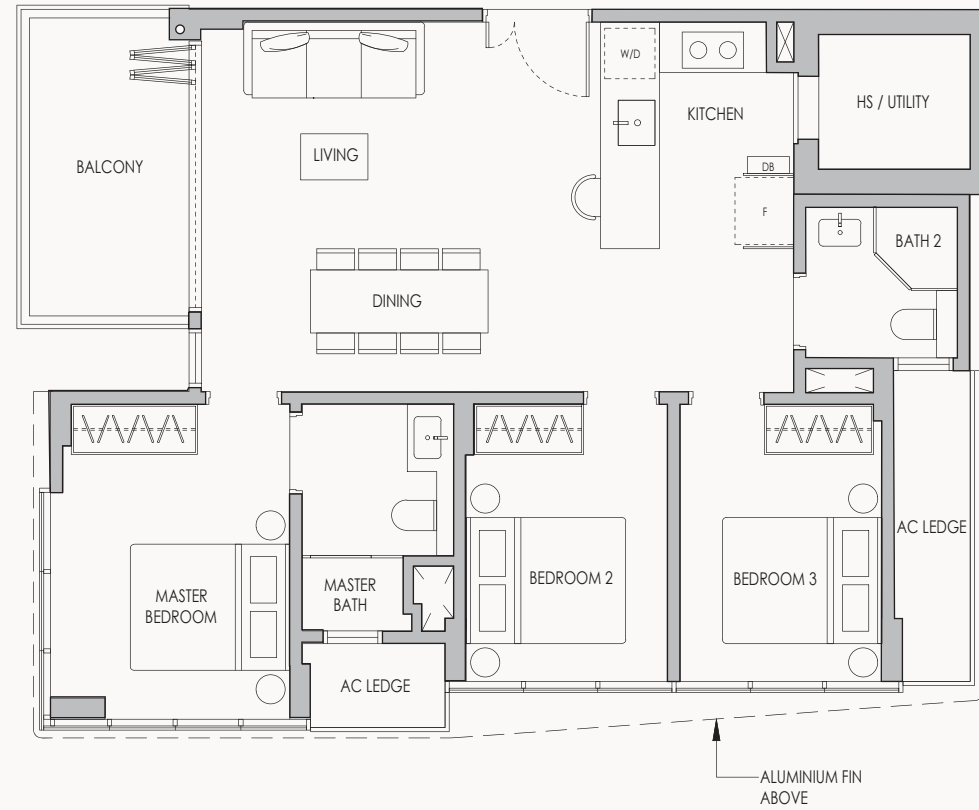


TYPE B1-a*

3-BEDROOM + UTILITY

Area: 980 sq ft / 91 sq m
(includes 9 sq m balcony & 6 sq m ac ledge)

Unit: #03-01



Disclaimer:
All plans are subjected to amendments as may be approved by the relevant authorities. Floor areas are approximate measurements and are subjected to final survey.
Legend (where applicable)
* Balconies/PES are not to be enclosed except with a balcony screen which has been approved and complies with the Competent Authority's guidelines.
For an illustration of the approved balcony screen, please refer to this brochure.



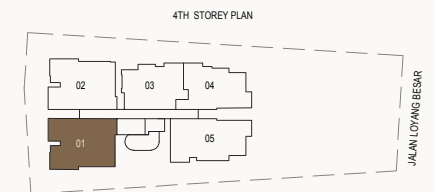
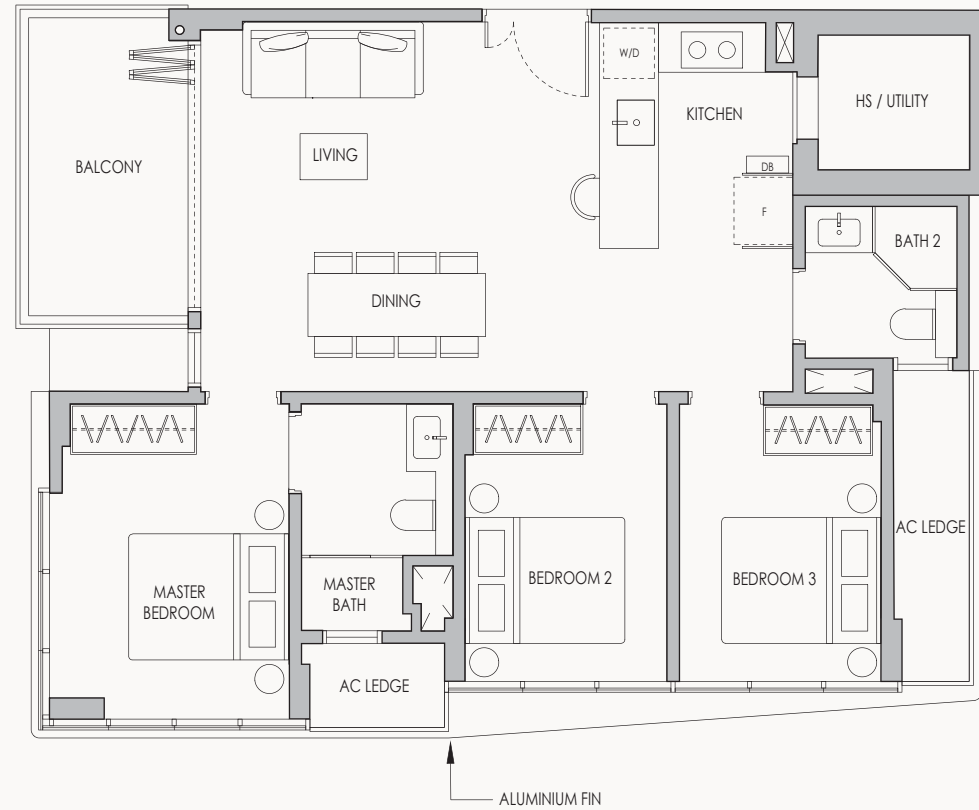
TYPE B1-b*

3-BEDROOM + UTILITY

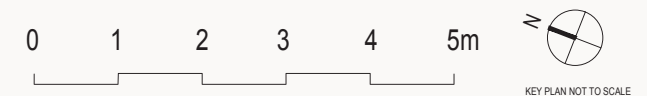
Area: 980 sq ft / 91 sq m

(includes 9 sq m balcony & 6 sq m ac ledge)

Unit: #04-01



Disclaimer:
All plans are subjected to amendments as may be approved by the relevant authorities. Floor areas are approximate measurements and are subjected to final survey.
Legend (where applicable)
* Balconies/PES are not to be enclosed except with a balcony screen which has been approved and complies with the Competent Authority's guidelines.
For an illustration of the approved balcony screen, please refer to this brochure.



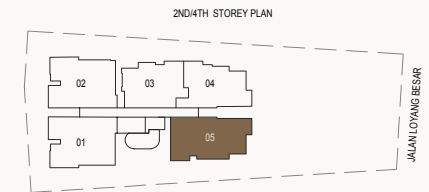
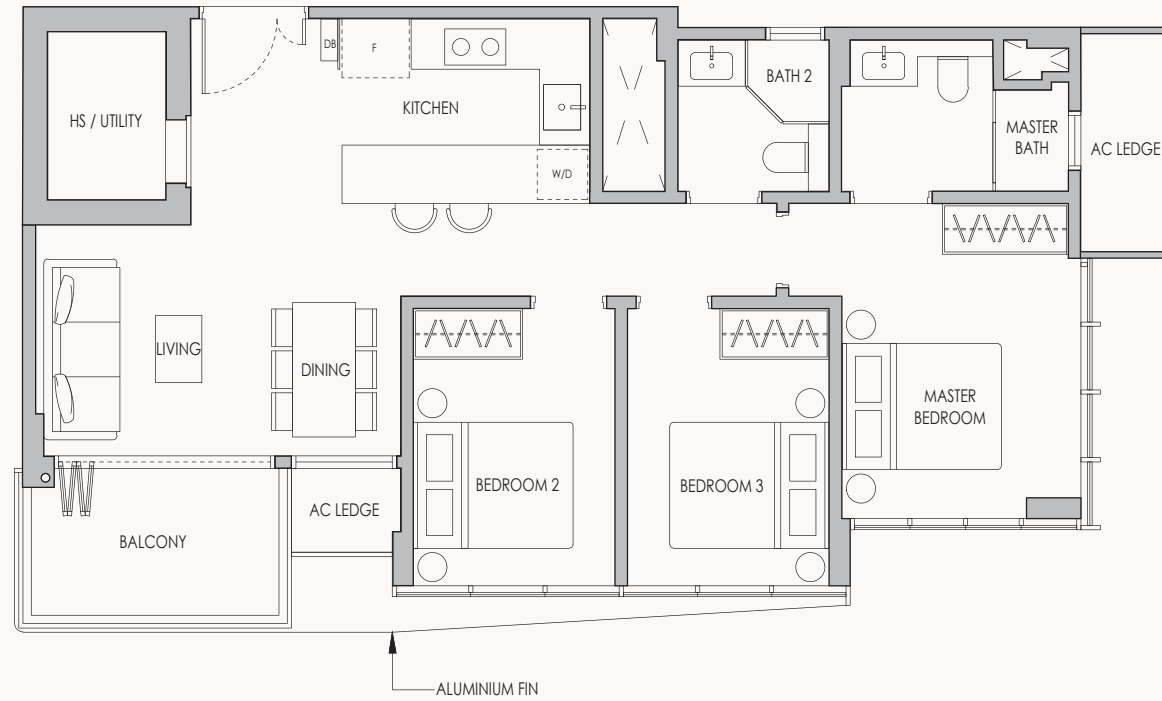
TYPE B2

3-BEDROOM + UTILITY

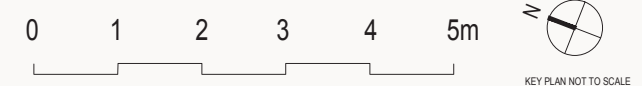
Area: 926 sq ft / 86 sq m

(includes 7 sq m balcony & 4 sq m ac ledge)

Unit: #02-05 & #04-05



Disclaimer:
All plans are subjected to amendments as may be approved by the relevant authorities. Floor areas are approximate measurements and are subjected to final survey.
Legend (where applicable)
* Balconies/PES are not to be enclosed except with a balcony screen which has been approved and complies with the Competent Authority's guidelines.
For an illustration of the approved balcony screen, please refer to this brochure.



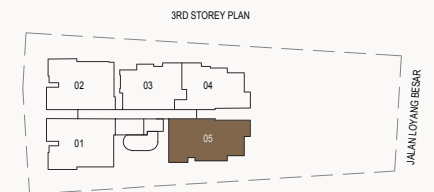
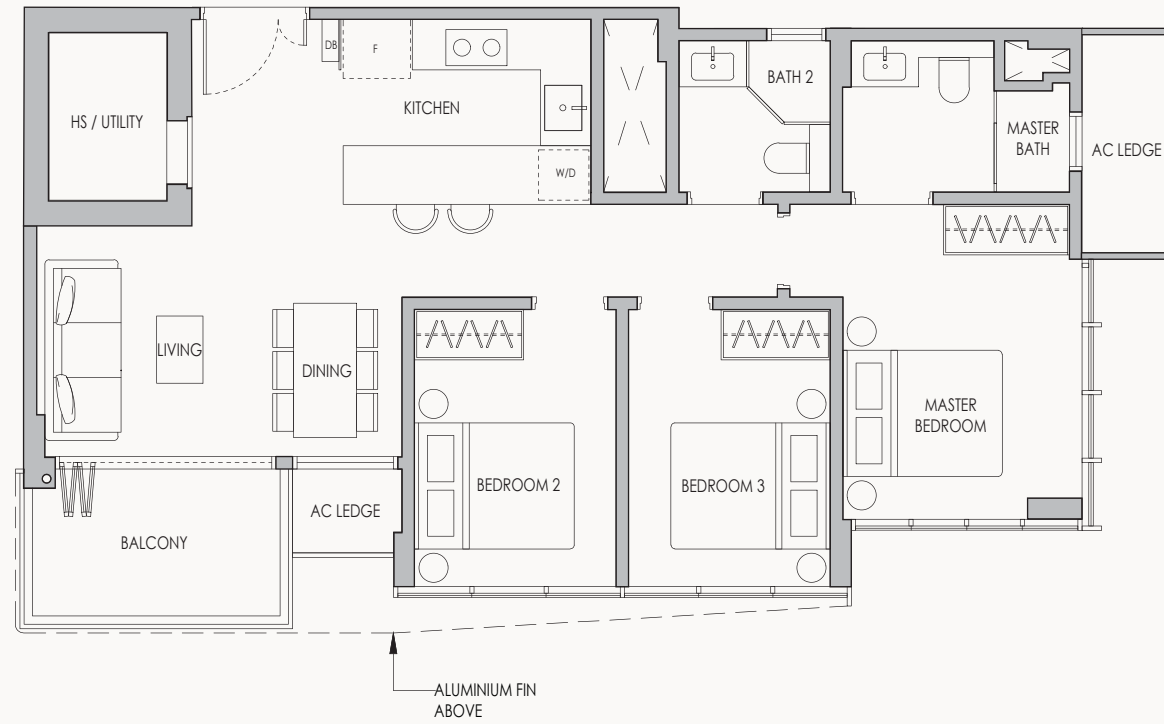
TYPE B2-a

3-BEDROOM + UTILITY

Area: 926 sq ft / 86 sq m

(includes 7 sq m balcony & 4 sq m ac ledge)

Unit: #03-05



Disclaimer:
All plans are subjected to amendments as may be approved by the relevant authorities. Floor areas are approximate measurements and are subjected to final survey.
Legend (where applicable)
* Balconies/PES are not to be enclosed except with a balcony screen which has been approved and complies with the Competent Authority's guidelines.
For an illustration of the approved balcony screen, please refer to this brochure.



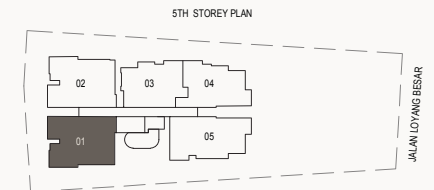
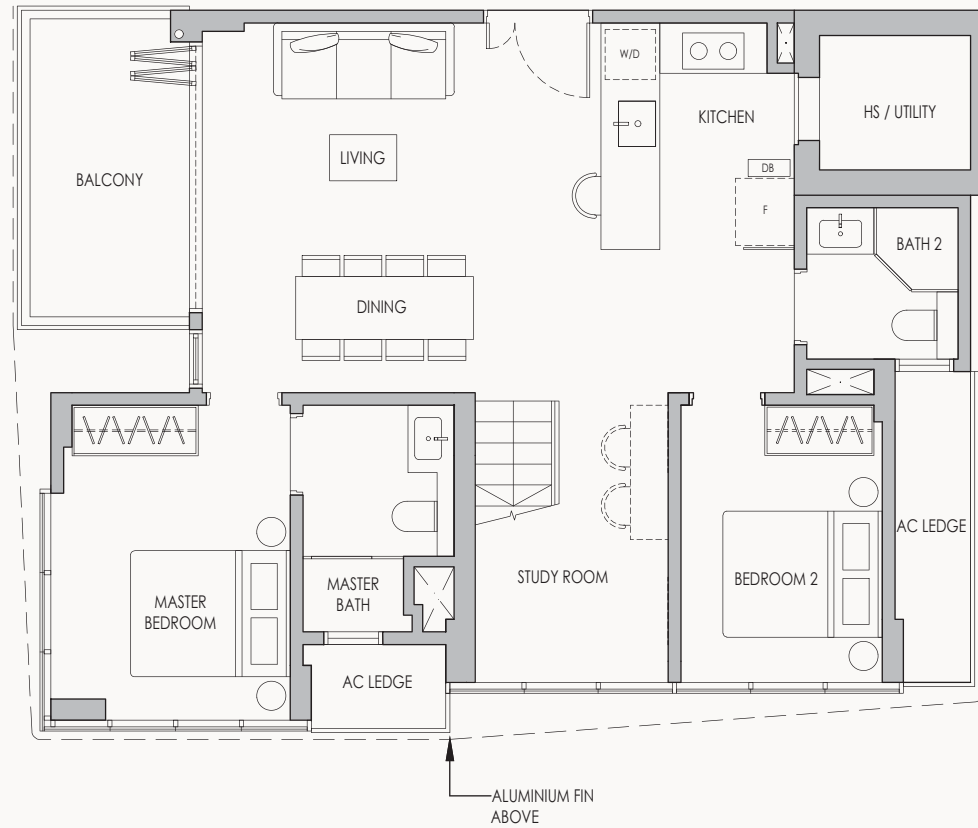
TYPE C1-PH

3-BEDROOM + FLEXI + STUDY ROOM + UTILITY

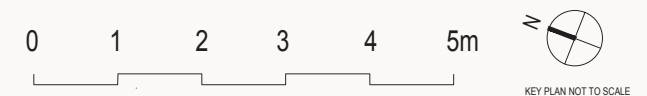
Area: 1679 sq ft / 156 sq m

(includes 9 sq m balcony & 10 sq m ac ledge)

Unit: #05-01



Disclaimer:
All plans are subjected to amendments as may be approved by the relevant authorities. Floor areas are approximate measurements and are subjected to final survey.
Legend (where applicable)
* Balconies/PES are not to be enclosed except with a balcony screen which has been approved and complies with the Competent Authority's guidelines.
For an illustration of the approved balcony screen, please refer to this brochure.



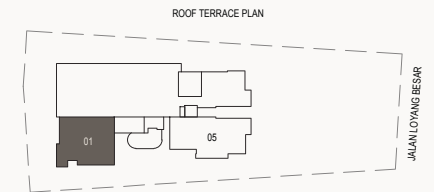
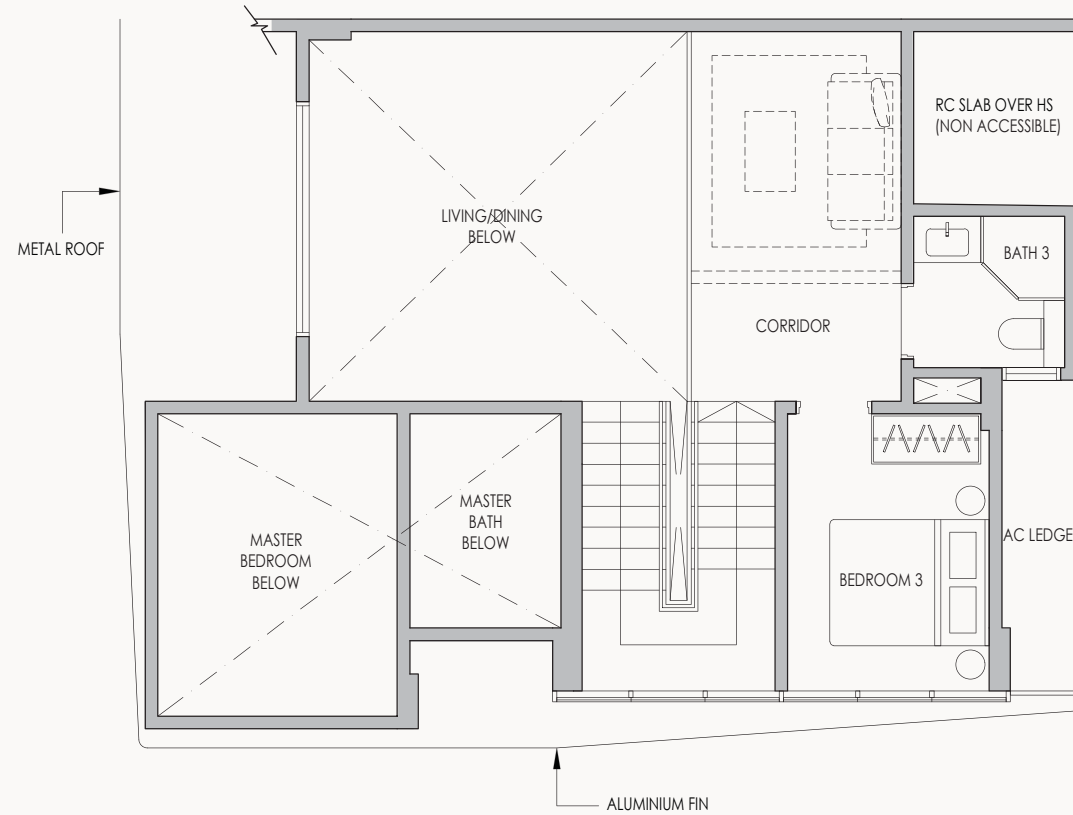
TYPE CI-PH

3-BEDROOM + FLEXI + STUDY ROOM + UTILITY

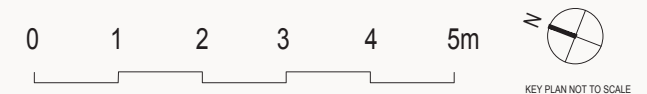
Area: 1679 sq ft / 156 sq m

(includes 9 sq m balcony & 10 sq m ac ledge)

Unit: #05-01



Disclaimer:
All plans are subjected to amendments as may be approved by the relevant authorities. Floor areas are approximate measurements and are subjected to final survey.
Legend (where applicable)
* Balconies/PES are not to be enclosed except with a balcony screen which has been approved and complies with the Competent Authority's guidelines.
For an illustration of the approved balcony screen, please refer to this brochure.

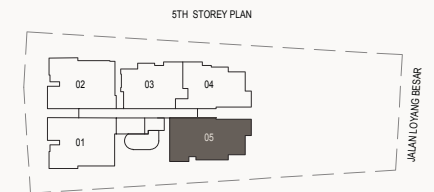
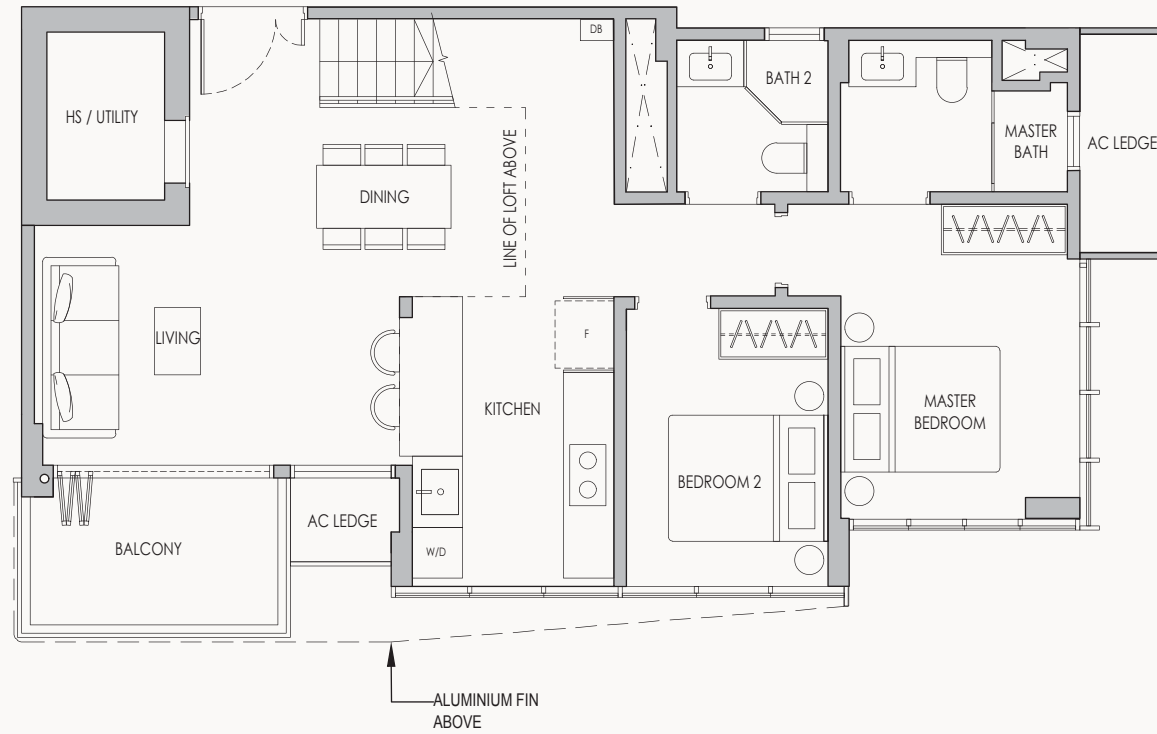


TYPE C2-PH

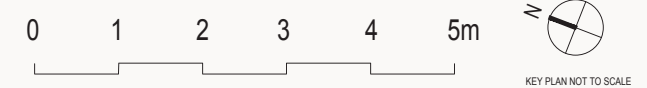
4-BEDROOM + UTILITY

Area: 1572 sq ft / 146 sq m
(includes 7 sq m balcony & 4 sq m ac ledge)

Unit: #05-05



Disclaimers:
All plans are subjected to amendments as may be approved by the relevant authorities. Floor areas are approximate measurements and are subjected to final survey.
Legend (where applicable)
* Balconies/PES are not to be enclosed except with a balcony screen which has been approved and complies with the Competent Authority's guidelines.
For an illustration of the approved balcony screen, please refer to this brochure.

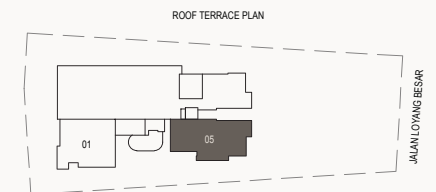
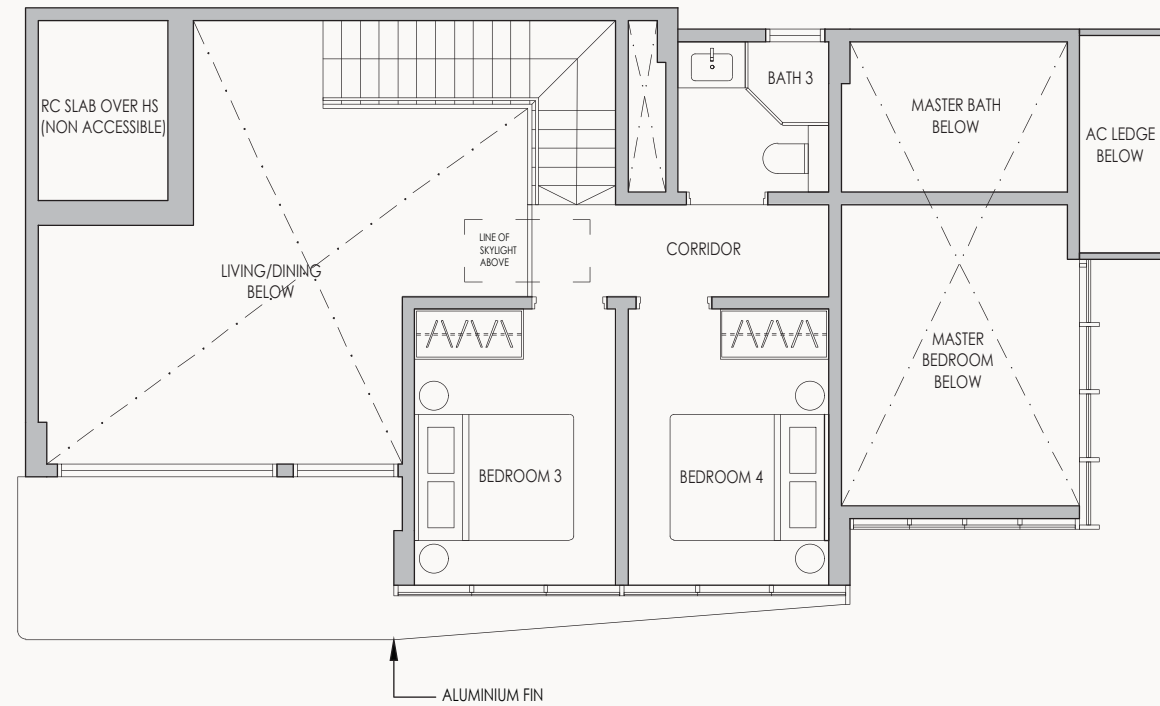


TYPE C2-PH

4-BEDROOM + UTILITY

Area: 1572 sq ft / 146 sq m
(includes 7 sq m balcony & 4 sq m ac ledge)

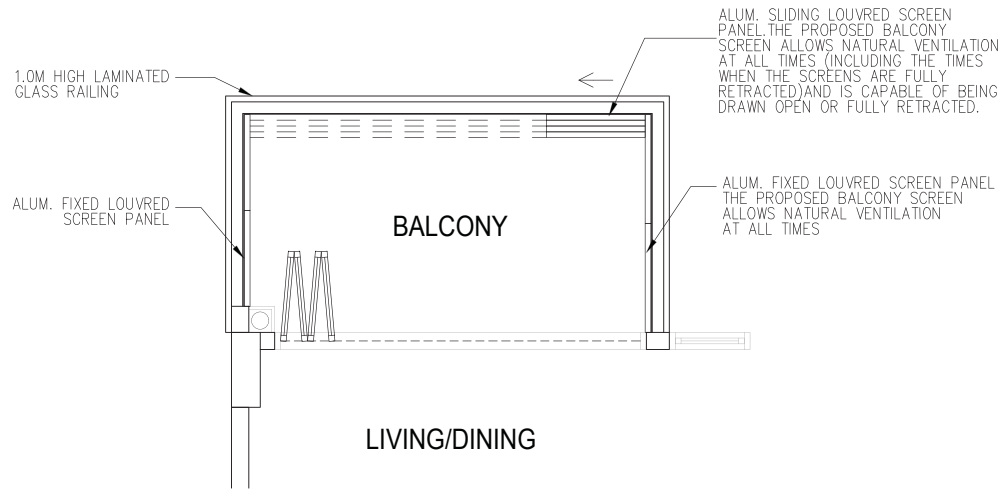
Unit: #05-05



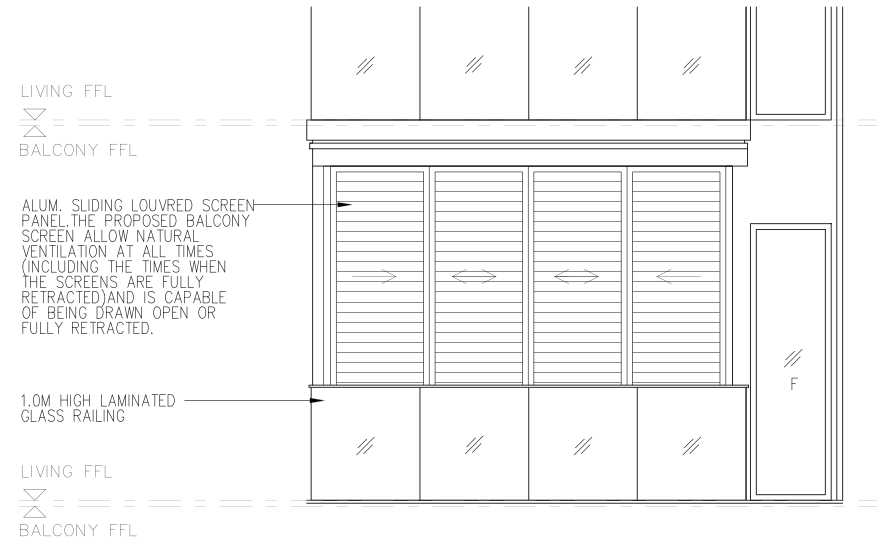
KEY PLAN NOT TO SCALE

Disclaimer:
All plans are subjected to amendments as may be approved by the relevant authorities. Floor areas are approximate measurements and are subjected to final survey.
Legend (where applicable)
* Balconies/PES are not to be enclosed except with a balcony screen which has been approved and complies with the Competent Authority's guidelines.
For an illustration of the approved balcony screen, please refer to this brochure.

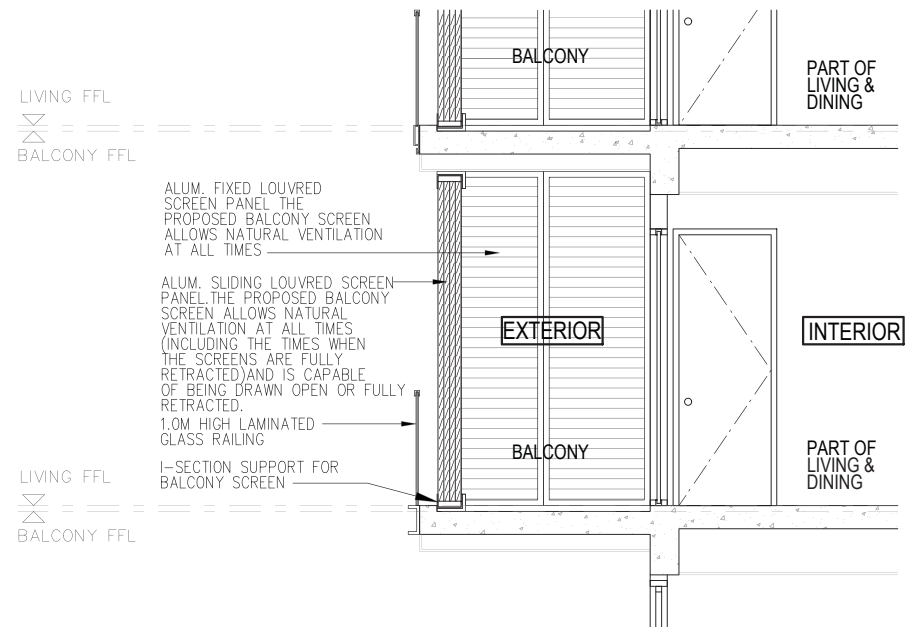
APPROVED BALCONY SCREEN DESIGN



TYPICAL RETRACTABLE BALCONY SCREEN - PLAN



ELEVATION



SECTION

This drawing is for reference only. The balcony shall not be enclosed unless with the approved balcony screen as shown above. The cost of installing the approved balcony screen is to be borne by purchaser. The balcony screen will not be provided by the Developer.